

Grout, mortar and concrete
Overview of technical data sheets

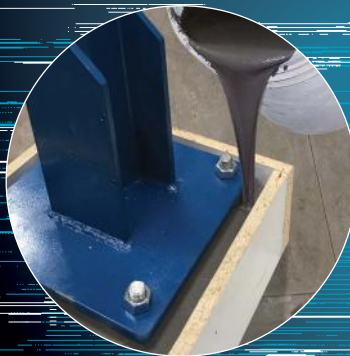
DIVISION
3

Daubois™



a **QUIKRETE®** company

COMMERCIAL GRADE
QUIKRETE®
CEMENT & CONCRETE PRODUCTS™



bomix®

CYNTECH

Others Divisions



For more than 60 years, Daubois Products Inc. has been involved in premixed concrete and mortar. Our experience in the field of masonry has allowed the company to become the leader in Quebec for everything related to the installation, strengthening and restoration of masonry elements on major jobsites.



Through its Construction Division, Daubois Products Inc. provides its expertise to various actors in construction projects as well as the repair of concrete structures. In collaboration with Target Products Ltd., its sister division in Western Canada, Daubois Products Inc. brings together expertise having worked on projects and construction sites throughout North America.



Daubois Products Inc. offers a variety of specialized construction products meeting distinct technical specifications for each projects. From self-consolidating concrete to post-tensioning grouts, as well as structural concrete for emergency repairs, Daubois Products Inc. is proud to be your partner in your construction projects.



Structural and Anchoring Grout

Target® 1110 Expanding Grout (PEG) Target® 11103 High Early Strength Expanding Grout (PEG-HE)

- Expanding structural grout (columns, base plates, machinery and bearing pads)
- Optimum load transfert
- Structural repair concrete
- Below, above or at ground level
- Indoor and outdoor

Characteristics (PEG)

Flow: 20 - 30 seconds
 $f'c$ @ 24 hours: 9.7 MPa (1,410 Psi)
 $f'c$ @ 28 days: 48.8 MPa (7,080 Psi)
 Maximum thickness: 150 mm (6 inches)
 Curing: 24 hours

Characteristics (PEG-HE)

Flow: 25 - 35 seconds
 $f'c$ @ 24 hours: 26.0 MPa (3,770 Psi)
 $f'c$ @ 28 days: 45.0 MPa (6,530 Psi)
 Maximum thickness: 150 mm (6 inches)
 Curing: 24 hours



Included in the list of materials approved by the MTQ
 - General purpose grout and anchoring grout

Target® 1125 Fondu Expanding Grout (FEG) Cold Weather

- Grout for low temperature work
- Permanently anchoring for highway furnitures, such as posts, signs and parking meters
- Permanently fixing anchor bolts, columns, railing and other fixtures in concrete, rock or masonry

Characteristics (FEG)

Flow: 20 - 30 seconds
 Rheological stability: Without bleeding and without segregation
 $f'c$ @ 24 hours: 18.6 MPa (2,700 Psi)
 Maximum thickness: 75 mm (3 inches)

Typical results at temperatures between -10 ° C and 3 ° C (14 ° F and 37 ° F) - Preconditioned mixing water at 50 ° C (122 ° F)



Target® 1117 Anchor Grout

- Soil tie back anchor grouting
- Grouting of fissures and cracks in rocks
- Anchor bolt grouting
- Thixotropic / Inhibits washout
- High early strength

Characteristics

Flow: 20 - 30 seconds
 Rheological stability: Without bleeding and without segregation
 $f'c$ @ 24 hours: 31.7 MPa (4,600 Psi) - $f'c$ @ 28 days: 82.7 MPa (12,000 Psi)
 Maximum thickness: 50 mm (2 inches)



Included in the list of materials approved by the MTQ
 - General purpose grout and anchoring grout

Target® 1118 Unsanded Silica Fume Grout

- Expanding grout for rock anchoring
- Grouting of fissures and cracks in rocks
- Inhibits washout
- Fluid phase expansion
- Post-tensioning grout

Characteristics

Flow: 20 - 30 seconds
 Rheological stability: Without bleeding and without segregation
 $f'c$ @ 28 days: 60.0 MPa (8,700 Psi)
 Maximum thickness: 50 mm (2 inches)



Structural and Anchoring Grout (ctnd)

Target® 1106 Machine Base Grout

- Under heavy machinery which transmits high stress to the grout, including milling machines and printing presses
- Base plates of equipment with dynamic loading
- Column base plates
- General machine base grouting
- Grout resistant to mild or moderate concentrations of many industrial chemicals (available with sulphate-resistant cement)
- Patching or filling blockouts
- Installing anchor bolts or tie rods

Characteristics

Flow: 20 - 50 seconds

Rheological stability: Without bleeding and without segregation

$f'c$ @ 24 hours: 18.6 MPa (2,700 Psi)

$f'c$ @ 28 days: 64.5 MPa (9,350 Psi)

Curing: 72 hours



Included in the list of materials approved by the MTQ

- General purpose grout and anchoring grout

Post-Tensioning Grout

Target® 1121 Cable Duct Grout

- Vertical and horizontal post-tensioning grout
- Protection of ducts and tension bars
- Optimum filling
- Extended working time
- Fluid phase expansion

Characteristics

Flow: 9 - 30 seconds

Rheological stability: Without bleeding and without segregation

$f'c$ @ 28 days: > 84.1 MPa > (12,200 Psi)

Maximum thickness: 50 mm (2 inches)



Included in the list of materials approved by the MTQ / MTO

- Post-tensioning grout

Mortar

Cyntech® Fortatop Thixotropic Mortar type R

- Structural repair
- Horizontal, vertical and overhead applications (thixotropic)
- Includes microfibers
- Corrosion inhibitor

Characteristics

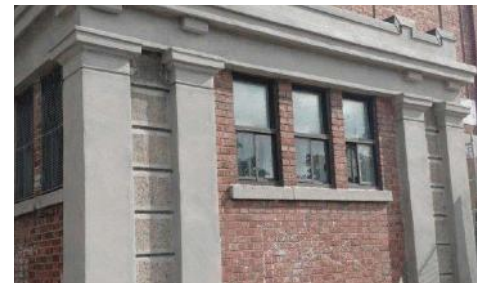
$f'c$ @ 24 hours: 22.0 MPa (3,910 Psi)

$f'c$ @ 28 days: 45.0 MPa (6,530 Psi)

Maximum thickness: 50 mm (2 inches) per layer

Curing: 24 hours

Durability: Excellent



Included in the list of materials approved by the MTQ

- Type R repair mortar

Mortar (ctnd)

Target® Traffic Patch® Fine Rapid Setting Fiber-reinforced Mortar

- Structural repairs (bridges, roads, columns, beams)
- Emergency repair - Return to normal service within 2 hours
- Ideal for low temperature

Characteristics (TPF)

Slump: 90 - 100 mm

Air content: 4 - 9%

$f'c$ @ 1 hour (after initial set): 14.8 MPa (2,150 Psi)

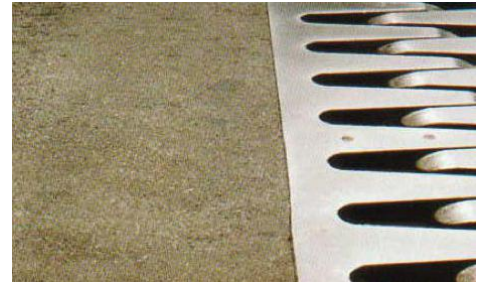
$f'c$ @ 3 hours: 20.7 MPa (3,000 Psi) ; $f'c$ @ 24 hours: 34.5 MPa (5,000 Psi)

$f'c$ @ 28 days: 51.7 MPa (7,500 Psi)

Minimum thickness: 12 mm (1/2 inch)

Curing: 24 hours (recommended)

Durability: Excellent



Concrete

Target® Flowcrete FS High Fluidity Concrete

- Structural concrete repair
- Horizontal surface leveling
- Little to no external vibration needed

Characteristics

Slump: 180 - 220 mm

Air content: 4 - 9%

$f'c$ @ 24 hours: 16.0 MPa (2,320 Psi) ; $f'c$ @ 28 days: 45.0 MPa (6,530 Psi)

Minimum thickness: 25 mm (1 inch)

Curing: 72 hours

Durability: Excellent



Quikrete® EA Mix 6 mm / EA mix 10 mm High Early Strength Fiber-reinforced Concrete

- Concrete structural repair
- Fiber-reinforced with air entrainment
- High early strength

Characteristics

Slump: 100 - 150 mm (4 - 6 inches)

$f'c$ @ 24 hours: 22.0 MPa (3,190 Psi)

$f'c$ @ 28 days: 50.0 MPa (7,250 Psi)

Durability: Excellent



Target® Traffic Patch® Coarse Rapid Setting Fiber-reinforced Concrete

- Structural repairs (bridges, roads, columns, beams)
- Emergency repair - Return to normal service within 2 hours
- Ideal for low temperature

Characteristics (TPC)

Slump: 90 - 100 mm

Air content: 4 - 9%

$f'c$ @ 1 hour (after initial set): 14.8 MPa (2,150 Psi)

$f'c$ @ 3 hours: 20.7 MPa (3,000 Psi) ; $f'c$ @ 24 hours: 34.5 MPa (5,000 Psi)

$f'c$ @ 28 days: 51.7 MPa (7,500 Psi)

Minimum thickness: 12 mm (1/2 inch)

Curing: 24 hours (recommended)

Durability: Excellent



Self-Consolidating Concrete

Target® Flowcrete FS SCC Self-Consolidating Concrete

- Concrete structural repair (bridges, tunnels, dams, highways, slabs on ground)
- Meets performance criteria for exposure class C-XL
- Open or closed formwork

Characteristics

Slump Flow: 600 - 700 mm
 Air content: 5 - 9%
 Rheological stability: Without bleeding and without segregation
 $f'c$ @ 28 days: 45.0 MPa (6,530 Psi)
 Minimum thickness: 25 mm (1 inch)
 Curing: 72 hours
 Durability: Excellent



Included in the list of materials approved by the MTQ
 - Self-consolidating concrete type XIV-S

Shotcrete (Dry and wet process)

Target® Superstick SD2201 Dry Process Shotcrete

- Mining applications
- Ground support and slope stabilization
- Construction of retaining walls
- Rehabilitation of deteriorated infrastructure

Characteristics

$f'c$ @ 28 days: 45.0 MPa (6,530 Psi)
 Curing: 72 hours
 Durability: Excellent



Included in the list of materials approved by the MTQ
 - Shotcrete - Dry process

Target® Superstick Dry / Wet Process Shotcrete

- Mining applications
- Ground support and slope stabilization
- Construction of retaining walls
- Rehabilitation of deteriorated infrastructure

Characteristics

Typical performance requirement
 $f'c$ @ 28 days: min 50.0 MPa (7,250 Psi)

- Available in several versions (contact a technical representative)
 - Fiber reinforced shotcretes formulated to meet different Toughness Performance Levels
 - TSA TARGET SHOTCRETE ACCELERATOR™
 - Air entrainment
 - Special high alumina cement based shotcretes can be formulated for refractory applications



Notes

Handwritten notes area consisting of 15 horizontal blue lines.

Handwritten notes area consisting of a grid of 20 columns and 20 rows of small blue squares.



www.daubois.com

1 (800) 561-2664

6155, boul. des Grandes-Prairies, St-Léonard (Qc) H1P 1A5